

# PEDOTEC



**APMS International Co. Ltd.**

No. 141, Yubao Rd., Xitun Dist., Taichung City 407, Taiwan (R.O.C.)

TEL: 886-4-23580132

FAX: 886-4-23595462

Website: [www.pedotecdesign.com](http://www.pedotecdesign.com)

E-mail: [apms@apms.tw](mailto:apms@apms.tw)

[info@pedotecdesign.com](mailto:info@pedotecdesign.com)

Specifications subject to change without notice.

**PEDOTEC** is a trademark of **APMS** International Co. Ltd.

Copyright © **APMS** International Co. Ltd.

All other trademarks are the property of their respective owners.



[apms@apms.tw](mailto:apms@apms.tw)

[info@pedotecdesign.com](mailto:info@pedotecdesign.com)

[www.pedotecdesign.com](http://www.pedotecdesign.com)

## 2025 COLLECTION



# The Company

## ABOUT PEDOTEC

Your promise to your customers is they will enjoy the most awesome Power Meter Pedals available on the market today.

We enable you to deliver on that promise by delivering to you the safest and most durable (and high-tech) power meter pedals around.

## How do we do this?

Through continual testing and modification, more testing and more modification. For example, the standard prescribes 1,000,000 revolutions — We test to 3,000,000. That adds up to 30 hours continual stress on the axle and bearing.

Drawing on our extensive OEM and ODM experience we have created the Formula range of power meter pedals.

We developed these cutting edge power meter pedals in partnership with SCADA and one of Taiwan's biggest personal electronics companies Direction Technology.

## Best Practice OEM/ODM

We still do OEM and ODM projects and have worked on Cycore products, to name a few.

If you have developed a fully fledged product of your own, we'll make it happen.

If you need high-tech engineering design input, we'll realize exactly the product you have in mind.

Extruded machined pedal and CNC-machined pedals are also our forte if that is what you need.



PEDOTEC is a trademark of APMS International Co. Ltd.  
Copyright © APMS International Co. Ltd.  
All other trademarks are the property of their respective owners.  
Specifications subject to change without notice.

## INDEX

### PEDOTEC

INTRODUCTION  
INDEX

### FORMULA

03 POWER METER  
05 CADENCE

### PEDALS

07 ROAD  
09 MTB  
13 BMX  
18 CITY, INDOOR

### ACCESSORIES

19 DRORRER POST  
21 CHAINRINGS  
22 CLEATS  
23 CHAIN GUIDE  
24 BOTTLES CAGES,  
WATER BOTTLES  
25 HANDLE BAR,  
GRIP PIN

POWER METER

PEDALS

ACCESSORIES

DROPPER POST



### Pedal products

Professional Pedal Products Series  
POWER METER, ROAD, MTB, BMX,  
CITY



### Company

Since 2012.1.1 APMS INTERNATIONAL CO., LTD.  
APMS has a large and highly skilled R & D team made pedals  
products experienced leader.



### Accessories

Accessories, Cleats , Chain Guide,  
Dropper post



### Introduction

The Measure of Factory 3967 Sq.ft  
Capacity of pedal per month 35,000prs

## ▶ contact us

[www.pedotecdesign.com](http://www.pedotecdesign.com)

[info@pedotecdesign.com](mailto:info@pedotecdesign.com)  
[apms@apms.tw](mailto:apms@apms.tw)

### APMS International Co. Ltd.

No. 141, Yubao Rd., Xitun Dist., Taichung City  
407022, Taiwan

TEL: 886-4-23580132

FAX: 886-4-23595462



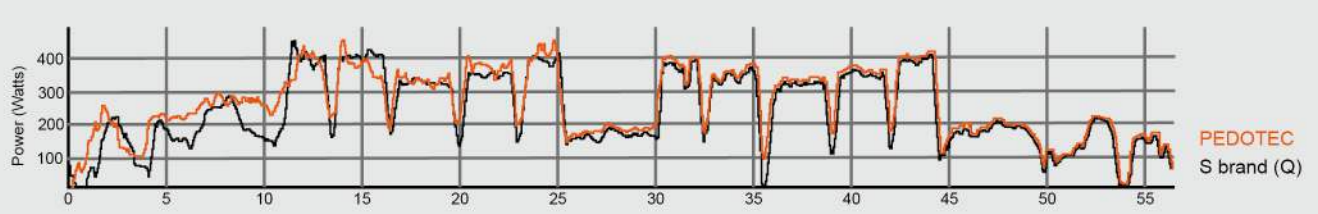
# POWER METER



**Compatible**  
Strava | Garmin | Wahoo

**Connectivity**  
Bluetooth Smart<sup>®</sup>  
ANT+

<b>FUNCTION</b> Measure both Power and Cadence	<b>BATTERY</b> CR2032, 3V 80~120 hours	<b>CONNECTIVITY</b> ANT+ / BLE	<b>WATER RESISTANT LEVEL</b> IPX6



FORMULA PA1 ( DOUBLE-SIDE )  
FORMULA PA2 ( SINGLE-SIDE )

FORMULA PS1 ( DOUBLE-SIDE )  
FORMULA PS2 ( SINGLE-SIDE )

## FORMULA PL1 ( DOUBLE-SIDE )



BODY: 6061 Aluminum, CNC-machined body  
 AXLE: CNC-machined, Cr-Mo  
 BEARING: Fiber-glass binding, LSL bushing & sealed  
 BINDING: Fiber-glass reinforced thermoplastic, tension adjustable  
 COMPATIBILITY: compatible with SPD-SL system  
 SIZE: 89\*94mm  
 BATTERY: CR2032,3V  
 TRANSMISSION BATTERY: ANT+ and Bluetooth smart  
 FUNCTION: Measure both power and cadence  
 WATER RESISTANT LEVEL: IPX6  
 OPERATION TEMPERATURE: -20~50°C  
 WEIGHT: 203g/pc(including battery)



## FORMULA PL2 ( SINGLE-SIDE )

## FORMULA PA1 ( DOUBLE-SIDE )



BODY: 6061 aluminum, forged body  
 AXLE: CNC-machined Cr-Mo  
 BEARING: Fiber-glass binding, LSL bushing & Sealed  
 BINDING: Fiber-glass reinforced thermoplastic, tension adjustable  
 COMPATIBILITY: Compatible with Look Keo system  
 SIZE: 83 x 94 mm  
 BATTERY: CR2032,3V  
 TRANSMISSION PROTOCOL: ANT+ and Bluetooth Smart  
 FUNCTION: Measure both power and cadence  
 WATER RESISTANT LEVEL: IPX6  
 OPERATION TEMPERATURE: -20~50°C  
 WEIGHT: 214 g/pc(including battery)



## FORMULA PA2 ( SINGLE-SIDE )

## FORMULA PS1 ( DOUBLE-SIDE )



BODY: 6061 aluminum, CNC-machined body  
 AXLE: CNC-machined Cr-Mo  
 BEARING: LSL bushing & Sealed  
 BINDING: Single-sided Cr-Mo binding, tension adjustable  
 COMPATIBILITY: Compatible with SPD system  
 SIZE: 54 x 98 mm  
 BATTERY: CR2032,3V  
 TRANSMISSION PROTOCOL: ANT+ and Bluetooth Smart  
 FUNCTION: Measure both power and cadence  
 WATER RESISTANT LEVEL: IPX6  
 OPERATION TEMPERATURE: -20~50°C  
 WEIGHT: 218 g/pc(including battery)

## FORMULA PS2 ( SINGLE-SIDE )



## CADENCE

# X

## e-PEDAL

BATTERY	LR44
TRANSMISSION PROTOCOL	ANT+ and BLE
FUNCTION	Measure Cadence
WATER RESISTANT LEVEL	IPX6
OPERATION TEMPERATURE	-20 ~ 50°C



**FUNCTION**  
Measure Cadence



**BATTERY**  
LR44  
400 hours



**CONNECTIVITY**  
ANT+ / BLE



**WATER RESISTANT LEVEL**  
IPX6



**COMPATIBLE APPS**



**LIGHT-CURRENT SYSTEM**

### KEO SYSTEM

## FORMULA RP-P1

**BODY:** Injection engineering thermoplastic  
**AXLE:** CNC-machined Cr-Mo  
**BEARING:** LSL bushing & sealed  
**BINDING:** Fiber-glass reinforced thermoplastic, tension adjustable  
**COMPATIBILITY:** Compatible with Look-Keo system  
**SIZE:** 83 X 94 mm  
**WEIGHT:** 180g/pc



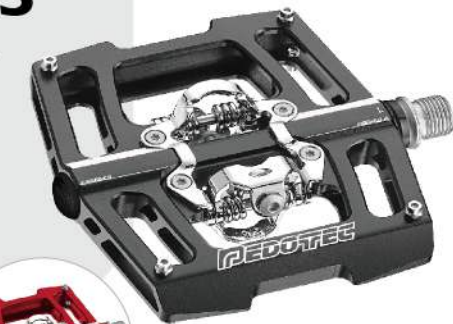
## FORMULA RP-M3

**BODY:** Die-Cast Aluminum  
**AXLE:** CNC-machined Cr-Mo  
**BEARING:** LSL bushing & sealed  
**BINDING:** Single-sided Cr-Mo, tension adjustable  
**OPTION:** Replaceable grip pins  
**OTHER:** Reflectors included  
**COMPATIBILITY:** Compatible with SPD system  
**SIZE:** 106 X 98 mm  
**WEIGHT:** 282g/pc



## FORMULA RP-M2CS

**BODY:** 6061 aluminum, CNC-machined  
**AXLE:** CNC-machined Cr-Mo  
**BEARING:** LSL bushing & sealed  
**BINDING:** Dual-sided Cr-Mo, tension adjustable  
**COMPATIBILITY:** Compatible with SPD system  
**SIZE:** 107 X 111 mm  
**WEIGHT:** 294g/pc  
**COLOR:** ● BK ● RD





COMPATIBLE WITH KEO SYSTEM

## PT-ARROW158

**BODY:** 6061 aluminum, CNC-machined  
**AXLE:** CNC-machined Cr-Mo  
**BEARING:** LSL bushing & sealed  
**BINDING:** Fiber-glass reinforced thermoplastic, tension adjustable  
**CLEAT:** PT-KCR72/ PT-KCB02  
**SIZE:** 85 X 90 mm  
**WEIGHT:** 157g/pc



COMPATIBLE WITH KEO SYSTEM

## PT-ARROW119

**BODY:** Injection engineering thermoplastic body with stainless abrasion guard  
**AXLE:** CNC-machined Cr-Mo  
**BEARING:** LSL bushing & sealed  
**BINDING:** Fiber-glass reinforced thermoplastic, tension adjustable  
**CLEAT:** PT-KCR72/ PT-KCB02  
**SIZE:** 83 X 94 mm  
**WEIGHT:** 125g/pc



COMPATIBLE WITH KEO SYSTEM

## PT-ARROW166

**BODY:** Die-cast aluminum  
**AXLE:** CNC-machined Cr-Mo  
**BEARING:** LSL bushing & sealed  
**BINDING:** Fiber-glass reinforced thermoplastic, tension adjustable  
**CLEAT:** PT-KCR72/ PT-KCB02  
**SIZE:** 86 X 86 mm  
**WEIGHT:** 164g/pc



COMPATIBLE WITH SHIMANO SYSTEM

## PT-ARROW163

**BODY:** 6061 aluminum, CNC-machined  
**AXLE:** CNC-machined Cr-Mo  
**BEARING:** LSL bushing & sealed  
**BINDING:** Fiber-glass reinforced thermoplastic, tension adjustable  
**CLEAT:** PT-SLR62/ PT-SLB02  
**SIZE:** 87 X 90 mm  
**WEIGHT:** 163g/pc



COMPATIBLE WITH SHIMANO SYSTEM

## PT-ARROW148

**BODY:** Injection engineering thermoplastic  
**AXLE:** CNC-machined Cr-Mo  
**BEARING:** LSL bushing & sealed  
**BINDING:** Fiber-glass reinforced thermoplastic, tension adjustable  
**CLEAT:** PT-SLR62/ PT-SLB02  
**SIZE:** 82 X 93 mm  
**WEIGHT:** 148g/pc



COMPATIBLE WITH SHIMANO SYSTEM

## PT-ARROW165

**BODY:** Die-cast aluminum  
**AXLE:** CNC-machined Cr-Mo(cartridge)  
**BEARING:** LSL bushing & sealed  
**BINDING:** Fiber-glass reinforced thermoplastic, tension adjustable  
**CLEAT:** PT-SLR62/ PT-SLB02  
**SIZE:** 88 X 93 mm  
**WEIGHT:** 165g/pc





DOUBLE-SIDE

## PT-AEGIS178

- BODY: Die-cast aluminum
- AXLE: CNC-machined Cr-Mo
- BEARING: LSL bushing & sealed
- BINDING: Dual-sided Cr-Mo, tension adjustable
- CLEAT: PT-S01
- SIZE: 80 X 60 mm
- WEIGHT: 178g/pc
- Ball Bearings** **PT-AEGIS178B** Ball bearings version



DOUBLE-SIDE

## PT-AEGIS197

- BODY: 6061 aluminum, CNC-machined
- AXLE: CNC-machined Cr-Mo
- BEARING: LSL bushing & sealed
- BINDING: Dual-sided Cr-Mo, tension adjustable
- CLEAT: PT-S01
- SIZE: 87 X 90 mm
- WEIGHT: 196g/pc



DOUBLE-SIDE

## PT-AEGIS213

- BODY: 6061 aluminum, CNC-machined
- AXLE: CNC-machined Cr-Mo
- BEARING: LSL bushing & sealed
- BINDING: Dual-sided Cr-Mo, tension adjustable
- CLEAT: PT-S01
- SIZE: 103 X 96 mm
- WEIGHT: 212g/pc



DOUBLE-SIDE

## PT-AEGIS279

- BODY: 6061 aluminum, CNC-machined
- AXLE: CNC-machined Cr-Mo
- BEARING: LSL bushing & sealed
- BINDING: Dual-sided Cr-Mo, tension adjustable
- CLEAT: PT-S01
- SIZE: 107 X 111 mm
- WEIGHT: 279g/pc
- COLOR: ● BK ● RD



DOUBLE-SIDE

## PT-AEGIS244

- BODY: Die-cast aluminum body with engineering thermoplastic platform
- AXLE: CNC-machined Cr-Mo
- BEARING: LSL bushing & sealed
- BINDING: Dual-sided Cr-Mo, spring-loaded, tension adjustable
- CLEAT: PT-S01
- SIZE: 105 X 103 mm
- WEIGHT: 244g/pc

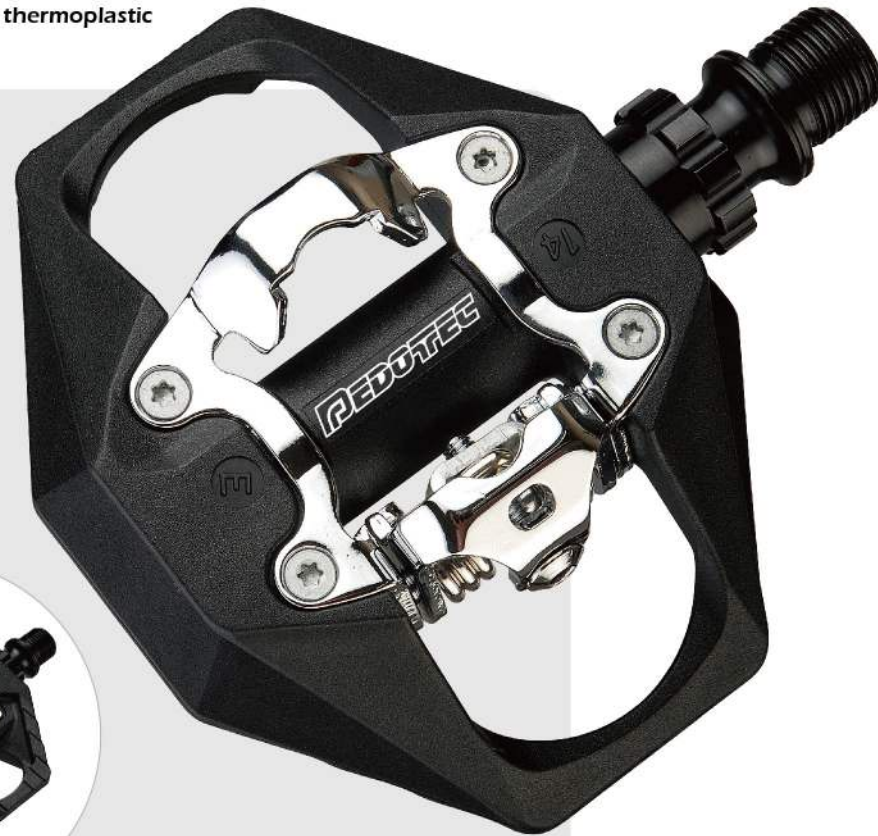




## SINGLE-SIDE

### PT-AEGIS175

**BODY:** Injection engineering thermoplastic  
**AXLE:** CNC-machined Cr-Mo  
**BEARING:** LSL bushing & sealed  
**BINDING:** Single-sided Cr-Mo, tension adjustable  
**CLEAT:** PT-S01  
**SIZE:** 94 X 100 mm  
**WEIGHT:** 175g/pc



## SINGLE-SIDE

### PT-AEGIS156

**BODY:** 6061 aluminum, CNC-machined  
**AXLE:** CNC-machined Cr-Mo  
**BEARING:** LSL bushing & sealed  
**BINDING:** Single-sided Cr-Mo, tension adjustable  
**CLEAT:** PT-S01  
**SIZE:** 84 X 86 mm  
**WEIGHT:** 157g/pc



## SINGLE-SIDE

### PT-AEGIS275

**BODY:** Die-cast aluminum  
**AXLE:** CNC-machined Cr-Mo  
**BEARING:** LSL bushing & sealed  
**BINDING:** Single-sided Cr-Mo, tension adjustable  
**OPTION:** Replaceable grip pins  
**OTHER:** Reflectors included  
**CLEAT:** PT-S01  
**SIZE:** 106 X 98 mm  
**WEIGHT:** 267g/pc  
**Ball Bearings** **PT-AEGIS275B** Ball bearings version



## SINGLE-SIDE

### PT-AEGIS241

**BODY:** 6061 aluminum, CNC-machined  
**AXLE:** CNC-machined Cr-Mo  
**BEARING:** LSL bushing & sealed  
**BINDING:** Single-sided Cr-Mo, tension adjustable  
**CLEAT:** PT-S01  
**SIZE:** 107 X 111 mm  
**WEIGHT:** 241g/pc  
**COLOR:** ● BK ● RD



## SINGLE-SIDE

### PT-AEGIS153

**BODY:** Injection engineering thermoplastic  
**AXLE:** CNC-machined Cr-Mo(cartridge)  
**BEARING:** LSL bushing & sealed  
**BINDING:** Single-sided Cr-Mo, tension adjustable  
**CLEAT:** PT-S01  
**SIZE:** 95 X 90 mm  
**WEIGHT:** 153g/pc





## PT-THUNDER117

**BODY:** Die-cast Magnesium  
**AXLE:** CNC-machined Cr-Mo  
**BEARING:** LSL bushing & sealed  
**OTHER:** Replaceable grip pins  
**SIZE:** 112 X 110 mm  
**WEIGHT:** 177g/pc  
**COLOR:** ● BK ● RD



## PT-THUNDER205

**BODY:** 6061 aluminum, CNC-machined  
**AXLE:** CNC-machined Cr-Mo  
**BEARING:** LSL bushing & sealed  
**OTHER:** Replaceable grip pins  
**SIZE:** 113 X 105 mm  
**WEIGHT:** 205g/pc  
**COLOR:** ● BK ● RD ● PK



## PT-THUNDER182

**BODY:** 6061 aluminum, CNC-machined  
**AXLE:** CNC-machined Cr-Mo  
**BEARING:** LSL bushing & sealed  
**OTHER:** Replaceable grip pins  
**SIZE:** 110 X 108 mm  
**WEIGHT:** 180g/pc  
**COLOR:** ● BK ● RD



## PT-THUNDER189

**BODY:** 6061 aluminum, CNC-machined  
**AXLE:** CNC-machined Cr-Mo  
**BEARING:** LSL bushing & sealed  
**OTHER:** Replaceable grip pins  
**SIZE:** 110 X 108 mm  
**WEIGHT:** 189g/pc  
**COLOR:** ● BK ● RD



## PT-THUNDER220

**BODY:** Die-cast aluminum  
**AXLE:** CNC-machined Cr-Mo  
**BEARING:** LSL bushing & sealed  
**OTHER:** Replaceable grip pins  
**SIZE:** 115 X 108 mm  
**WEIGHT:** 230g/pc  
**COLOR:** ● BK ● RD



## PT-THUNDER171

**BODY:** 6061 aluminum, CNC-machined  
**AXLE:** CNC-machined Cr-Mo  
**BEARING:** LSL bushing & sealed  
**OTHER:** Replaceable grip pins  
**SIZE:** 102 X 108 mm  
**WEIGHT:** 170g/pc  
**COLOR:** ● BK ● RD





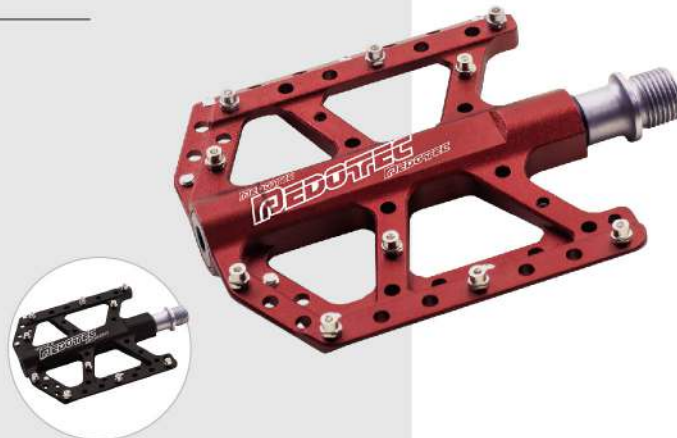
## PT-THUNDER225

**BODY:** Die-cast aluminum  
**AXLE:** CNC-machined Cr-Mo  
**BEARING:** LSL bushing & sealed  
**OTHER:** Reflectors included, Replaceable grip pins  
**SIZE:** 111 X 108 mm  
**WEIGHT:** 225g/pc  
**COLOR:** ● BK ● RD



## PT-THUNDER195

**BODY:** 6061 aluminum, CNC-machined  
**AXLE:** CNC-machined Cr-Mo  
**BEARING:** LSL bushing & sealed  
**OTHER:** Replaceable grip pins  
**SIZE:** 100 X 105 mm  
**WEIGHT:** 195g/pc  
**COLOR:** ● BK ● RD



## PT-THUNDER148

**BODY:** 6061 aluminum, CNC-machined  
**AXLE:** CNC-machined Cr-Mo  
**BEARING:** LSL bushing & sealed  
**OTHER:** Replaceable grip pins  
**SIZE:** 100 X 105 mm  
**WEIGHT:** 148g/pc  
**COLOR:** ● BK ● RD



NEW

## PT-THUNDER172

**BODY:** Engineering thermoplastic  
**AXLE:** CNC-machined Cr-Mo  
**BEARING:** Oversize bearing, Needle bearing, Sealed bearing  
**OTHER:** Replaceable grip pins  
**SIZE:** 117 X 114 mm  
**WEIGHT:** 171g/pc  
**COLOR:** ● BK ● RD ● OG ● LM ● GR ● BL



NEW

## PT-THUNDER184D

**BODY:** Engineering thermoplastic  
**AXLE:** CNC-machined Cr-Mo  
**BEARING:** 2 Flange bearings  
**OTHER:** Replaceable grip pins  
**SIZE:** 113 X 114 mm  
**WEIGHT:** 183g/pc  
**COLOR:** ● BK ● RD ● OG ● LM ● GR ● BL





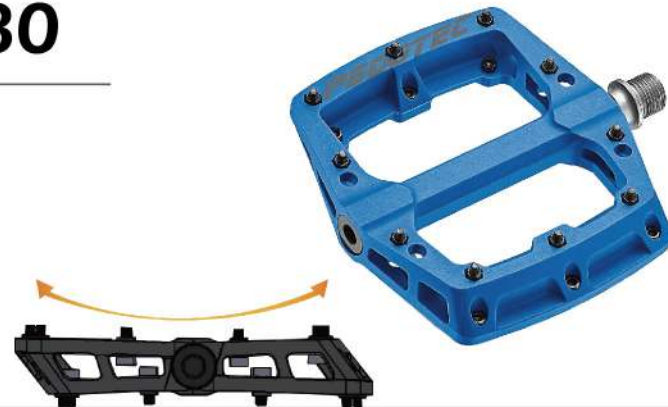
## PT-THUNDER183

BODY: Engineering thermoplastic  
 AXLE: CNC-machined Cr-Mo  
 BEARING: LSL bushing & sealed  
 OTHER: Replaceable grip pins  
 SIZE: 113 X 105 mm  
 WEIGHT: 175g/pc  
 COLOR: ● BK ● RD ● OG ● LM ● GR ● BL



## PT-THUNDER180

BODY: Engineering thermoplastic  
 AXLE: CNC-machined Cr-Mo  
 BEARING: LSL bushing & sealed  
 OTHER: Replaceable grip pins  
 SIZE: 113 X 114 mm  
 WEIGHT: 180g/pc  
 COLOR: ● BK ● RD ● OG ● LM ● GR ● BL



NEW

## PT-CE188

BODY: Engineering thermoplastic body with sand-paper  
 AXLE: CNC-machined Cr-Mo  
 BEARING: LSL bushing, sealed  
 OTHER: Reflectors included  
 SIZE: 108 X 86 mm  
 WEIGHT: 188g/pc  
 COLOR: ● BK ● RD ● OG ● LM ● BL  
 ★ 2DU PT-CED188



NEW

## PT-CF218

BODY: Die-cast Aluminum with sand-paper  
 AXLE: CNC-machined Cr-Mo  
 BEARING: LSL bushing, sealed  
 OTHER: Reflectors included  
 SIZE: 110 X 88 mm  
 WEIGHT: 218g/pc  
 ★ 2DU PT-CFD218



## PT-CF158

BODY: 6061 aluminum, CNC-machined body with sand-paper  
 AXLE: CNC-machined Cr-Mo  
 BEARING: LSL bushing & sealed  
 SIZE: 98 X 78 mm  
 WEIGHT: 158g/pc  
 COLOR: ● BK ● SL



## PT-ARROW242

BODY: Die-cast aluminum  
 AXLE: CNC-machined Cr-Mo  
 BEARING: Needle, Sealed bearing  
 BINDING: LOOK Delta system, Shimano SPD system compatible  
 CLEAT: PT-DCR61 & PT-S01  
 SIZE: 87x99 mm  
 WEIGHT: 270g/pc





# DROPPER POST

# HK series



**RLV01**  
ALLOY



**RLH01**  
NYLON



**RLH02**  
ALLOY

**NEW**

MODEL	PT-HK272100
Ø OD	27.2mm
TRAVEL	100mm
LENGTH	367mm
CARTRIDGE	air/oil cartridge
MIN.INSERT	100mm
WEIGHT	472g



MODEL	PT-HK309125	PT-HK309155	PT-HK309185	PT-HK309215
Ø OD	30.9mm	30.9mm	30.9mm	30.9mm
TRAVEL	125mm	155mm	185mm	215mm
LENGTH	386mm	446mm	506mm	566mm
CARTRIDGE	air/oil cartridge	air/oil cartridge	air/oil cartridge	air/oil cartridge
MIN.INSERT	90mm	100mm	130mm	150mm
WEIGHT	465g	526g	580g	623g

MODEL	PT-HK316125	PT-HK316155	PT-HK316185	PT-HK316215
Ø OD	31.6mm	31.6mm	31.6mm	31.6mm
TRAVEL	125mm	155mm	185mm	215mm
LENGTH	386mm	446mm	506mm	566mm
CARTRIDGE	air/oil cartridge	air/oil cartridge	air/oil cartridge	air/oil cartridge
MIN.INSERT	90mm	100mm	130mm	150mm
WEIGHT	486g	545g	597g	647g

MODEL	PT-HK349125	PT-HK349155	PT-HK349185	PT-HK349215
Ø OD	34.9mm	34.9mm	34.9mm	34.9mm
TRAVEL	125mm	155mm	185mm	215mm
LENGTH	386mm	446mm	506mm	566mm
CARTRIDGE	air/oil cartridge	air/oil cartridge	air/oil cartridge	air/oil cartridge
MIN.INSERT	90mm	100mm	130mm	150mm
WEIGHT	519g	572g	625g	682g

MODEL	PT-HS309125	PT-HS309155	PT-HS316125	PT-HS316155	PT-HS349125	PT-HS349155
Ø OD	30.9mm	30.9mm	31.6mm	31.6mm	34.9mm	34.9mm
TRAVEL	125mm	155mm	125mm	155mm	125mm	155mm
LENGTH	386mm	446mm	386mm	446mm	386mm	446mm
CARTRIDGE	air	air	air	air	air	air
WEIGHT	465g	526g	486g	545g	528g	581g
SUSPENSION TRAVEL	35mm	35mm	35mm	35mm	35mm	35mm



# CHAINRINGS



## PT-CRE103

**FIT ANY 104 BCD CRANK  
AL 7075 FULL CNC**

BCD: 104mm  
TEETH: 38/24,36/22T  
WEIGHT: 45g/(34T)  
COMPATIBILITY: 9/10/11 speed



## PT-CRE105

**DIRECT MOUNT  
AL 7075 FULL CNC**

TEETH: 26/28/30/32/34/36/38/40T  
WEIGHT: 75g(32T)  
COMPATIBILITY: 9/10/11 speed



## PT-CRE106

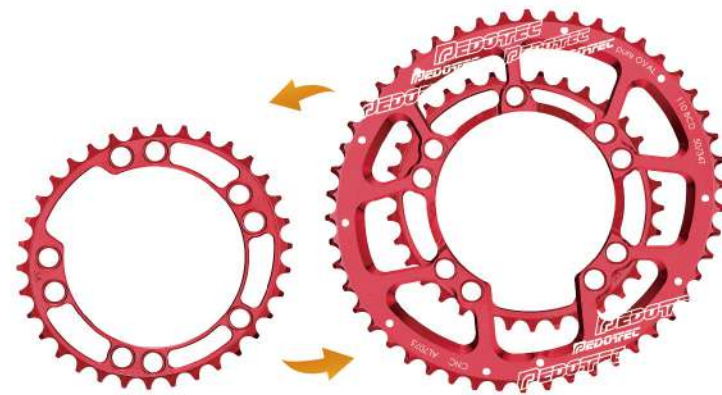
**FIX XT M8000  
AL 7075 FULL CNC**

BCD: 96mm  
TEETH: 34/36/38T  
WEIGHT: 49g(34T)  
COMPATIBILITY: 9/10/11 speed

## PT-CRE209

**FOR BOTH 4-ARM & 5-ARM SPIDER  
AL 7075 FULL CNC**

BCD: 110mm  
TEETH: 53/39T, 52/36T, 50/34T  
WEIGHT: 153g/pc



## PT-CRE303

**AL 7075 FULL CNC**

BCD: 104/64mm  
TEETH: 42/33/24T  
WEIGHT: 148g/pc



# CLEAT

NEW

KEO SYSTEM



## PT-KCR71

MODE: Floating(7°)  
MATERIAL: Engineering thermoplastic  
COMPATIBILITY: Look keo system  
WEIGHT: 24g/pc



## PT-KCR72

MODE: Floating(7°)  
MATERIAL: Engineering thermoplastic /TPU plastic  
COMPATIBILITY: Look keo system  
WEIGHT: 23g/pc



## PT-KCB01

MODE: Fixed  
MATERIAL: Engineering thermoplastic  
COMPATIBILITY: Look keo system  
WEIGHT: 24g/pc



## PT-KCB02

MODE: Fixed  
MATERIAL: Engineering thermoplastic /TPU plastic  
COMPATIBILITY: Look keo system  
WEIGHT: 23g/pc

NEW

ROAD SYSTEM



## PT-SLR61

MODE: Floating(6°)  
MATERIAL: Engineering thermoplastic  
COMPATIBILITY: SPD-SL  
WEIGHT: 25g/pc



## PT-SLR62

MODE: Floating(6°)  
MATERIAL: Engineering thermoplastic /TPU plastic  
COMPATIBILITY: SPD-SL  
WEIGHT: 25g/pc



## PT-SLB01

MODE: Fixed  
MATERIAL: Engineering thermoplastic  
COMPATIBILITY: SPD-SL  
WEIGHT: 25g/pc



## PT-SLB02

MODE: Fixed  
MATERIAL: Engineering thermoplastic /TPU plastic  
COMPATIBILITY: SPD-SL  
WEIGHT: 25g/pc

MTB SYSTEM



## PT-S01

COMPATIBILITY: SPD  
WEIGHT: 20g/pc



## PT-C03F

COMPATIBILITY: SPD  
WEIGHT: 20g/pc



DELTA SYSTEM



## PT-DCR61

MODE: Floating(6°)  
MATERIAL: Engineering thermoplastic  
COMPATIBILITY: Look Delta system  
WEIGHT: 25g/pc

CLEAT COVERS

Eliminates cleat wear.Improves walking comfort  
lightweight, durable and flexible



## PT-CK3B

COMPATIBILITY: Look keo system  
WEIGHT: 23g/pc  
Compatible with Road Cleats  
KCR71, KCR72, KCB01, KCB02



## PT-CK6B

WEIGHT: 43g/pc  
Compatible with Road Cleats  
RSL11, BSL11, also SPD-SL system



## PT-CK2B

WEIGHT: 7g/pc  
Compatible with MTB Cleats  
S01, C03F



## PT-CCG01

**BODY:** 6061 aluminum, CNC-machined with hi-polished anodized  
**HINGE:** Nylon 6, Hinge & universal hinge available  
**GUIDE:** Tube TPU  
**COLOR:** ● BK ● RD ● GD



Easy to install, no need to remove the chain



**BIKE AND FREERIDE MILESTONE AWARD 2011**

Voted by the readers of bike (europe's biggest mtb magazine) and freeride (the gravity branch of bike).

**EUROBIKE AWARD 2010.**

Design competition held annually by trade fair organizers in association with if design award.

**MANUFACTURED BY SCADA**

## PT-CCG03

**BODY:** TPU  
**HINGE:** TPU  
**GUIDE:** Tube TPU



## PT-TI01

**PRODUCT:** BOTTLE CAGE  
**MATERIAL:** 6mm TITANIUM  
**WEIGHT:** 34g/pc



## PT-TI02

**PRODUCT:** BOTTLE CAGE  
**MATERIAL:** 6mm TITANIUM  
**WEIGHT:** 34g/pc



## PT-CA01

**PRODUCT:** BOTTLE CAGE  
**MATERIAL:** Carbon  
**WEIGHT:** 20g/pc



BK/WH/OG

BK/WH/RD

BK/WH

WH/BK/RD

## PT-512LW-BK

**PRODUCT:** BOTTLE  
**BOTTLE MATERIAL:** LDPE  
**CAP MATERIAL:** Polypropylene  
**VOLUME:** 800cc



## CSB-537W

**PRODUCT:** BOTTLE  
**BOTTLE MATERIAL:** LDPE  
**CAP MATERIAL:** Polypropylene  
**VOLUME:** 700cc



## CSB-512LW

**PRODUCT:** BOTTLE  
**BOTTLE MATERIAL:** LDPE  
**CAP MATERIAL:** Polypropylene  
**VOLUME:** 800cc



## CSB-512MW

**PRODUCT:** BOTTLE  
**BOTTLE MATERIAL:** LDPE  
**CAP MATERIAL:** Polypropylene  
**VOLUME:** 600cc





# HANDLE BAR, GRIP PIN



MODEL	PT-HB710	PT-HB760	PT-HB787
MATERIAL	Carbon	Carbon	Carbon
SIZE	31.8 X 710mm	31.8 X 760mm	31.8 X 787mm
WEIGHT	195g/pc	225g/pc	260g/pc
MODEL	PT-HB800	PT-HB810	
MATERIAL	Carbon	Carbon	
SIZE	35 X 800mm	35 X 810mm	
WEIGHT	225g/pc	255g/pc	

## STEEL GRIP PINS

### GRIP PIN COLOR OPTION

Custom grip pin colors based on MOQ 150PRS

**PT-ESS088-4**  
M4 X 4mm



**PT-ESS088-8**  
M4 X 8mm



**PT-ESS113**  
M4 X 4mm



## ALUMINUM GRIP PINS

**PT-ESS112-4**  
M4 X 4mm



**PT-ESS112-8**  
M4 X 8mm



INFINITE CHALLENGE WITH **REDOTEC**

NEW



Professional Pedal Product Series  
ROAD, MTB, BMX, CITY



Design . Manufacturing . Quality

**REDOTEC**